

## Practical Information

### GOOD PRACTICES IN DOCTORAL SUPERVISION

25-27 June 2018

Faculty of Engineering of the University of Porto

#### Welcome to Porto



Thousands of charms and corners are worth discovering in the capital of Northern Portugal. Classified as a World Heritage Site since 1996, Porto historical centre contains a monumental and landscape richness where you can see several urban conceptual solutions varying from the medieval times to early modernity.

It wouldn't be right to characterize Porto by simply choosing one of the factors that make this destiny more and more attractive. One is divided between the richness of its architecture and heritage, its ever growing artistic and cultural expression, the growing liveliness downtown, night and day, its gastronomy and excellent wine, and its charming hospitable genuine people.

More info: <http://www.visitporto.travel/>

#### Faculty of Engineering of the University of Porto

The Faculty of Engineering of the University of Porto undertakes activities in the realms of education, research, and innovation at international level. Accordingly, the results of these activities lead to the creation and transmission of knowledge, training of competent and ethical professionals, and future leaders in the area of engineering and similar areas, and also the promotion of wellbeing of our global society.

FEUP is a globally renowned institution in a variety of areas of Engineering, for students, technicians, researchers and managers, and for innumerable national and international organizations. This is due to the persistent work of its Community and its various partners over many years, overcoming obstacles of various sorts, and always seizing the opportunity to develop.



## Public Transportation

The Porto “metro” has a station at the [airport](#) with trains and buses into the city every 20-30 minutes. You should buy your “Andante” ticket from one of the ticket machines of the airport. A ticket to the city center (4 zones) costs €2,45 and that includes the €0,60 rechargeable Andante card. **The ticket is valid during 1 hour, both for metro and buses.**

- To go to the city center from the airport: Take the metro line E (purple) and leave at the station “Trindade” or “Bolhão”.
- To go to the Faculty of Engineering: If you go directly from the airport, you should take the metro line E (purple), leave at the station “Trindade”, change to metro line D (yellow) and leave at the station “Pólo Universitário”.

If you are already in the city center, you just have to catch the metro line D (yellow), with a metro ticket charged with 2 zones, which costs €1,20.

You can also catch a **taxi** at the airport; the price for the city center will be around 20€ and even less if it goes directly to the Faculty of Engineering.

## Accommodation

We strongly recommend you to book accommodation as soon as you receive the acceptance email. SGroup will not assure any reservations, but you can take a look at our suggestions, near the Faculty of Engineering or on the city center. Prices may vary according to the time of booking.



### [Hotel Portinari](#)

Price single room: 30€  
Price double room: 35€

Distance to the Faculty of Engineering: [10 minutes walking](#)  
Distance to the city center: [20 minutes by metro](#)



### [Eurostars Oporto](#)

Price single room: 99€  
Price double room: 99€

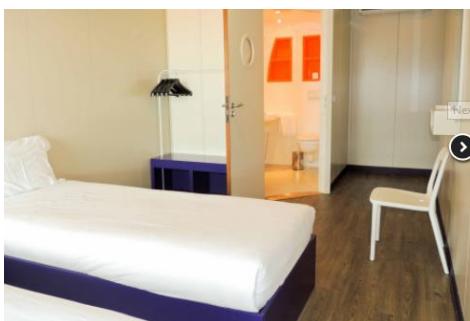
Distance to the Faculty of Engineering: [17 minutes walking](#)  
Distance to the city center: [20 minutes by metro](#)



### [Moov Hotel Porto Centro](#)

Price single room: 62€  
Price double room: 62€

Distance to the Faculty of Engineering: [20 minutes by metro](#)  
Distance to the city center: [5 minutes walking](#)



### [Istay Hotel Porto Centro](#)

Price single room: 70€  
Price double room, per night: 70€

Distance to the Faculty of Engineering: [30 minutes by metro](#)  
Distance to the city center: [10 minutes walking](#)

## Registration

Register [here](#), as soon as possible, **no later than 31 May**.